

# GERMAN GYMNASIUM KINGS CROSS - LONDON

## PROJECT PROFILE



“ From design to commissioning, the MP Kitchen Ventilation teams attention to detail was extraordinary. ”

## CHALLENGES:

150 years after hosting the 'National Olympian Games', the forerunner of today's modern Olympics, the **Grade II listed building** has been transformed into one of London's most exciting new restaurant developments.

Mansfield Pollard's Kitchen Ventilation team were challenged with designing, manufacturing and installing **three modern canopies up to 20m<sup>2</sup>**, whilst retaining the original details such as **vast laminated timber roof trusses and exposed 57ft high ceilings**.

In addition, the canopies were to act as a **focal point for customers** within the **theatre kitchen**.

 **20m<sup>2</sup> FULLY SUSPENDED  
FEATURE CANOPIES**

 **SYMPATHETICALLY DESIGNED  
AND FINISHED**

 **ONE COMPANY FROM  
DESIGN TO COMMISSIONING**

 **100% ON-TIME & ON BUDGET**

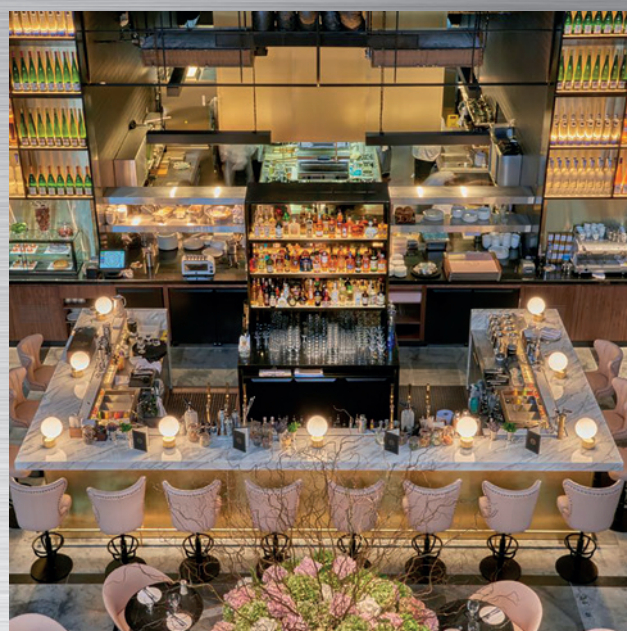


## OUR SOLUTION:

Installing a canopy that weighed over 900Kg required **meticulous design** and co-ordination between Mansfield Pollard's specialist engineers. The **canopies were suspended** from specially designed steelwork 57ft above the dining area.

A **bespoke canopy construction** meant the 20m<sup>2</sup> double island canopy could be easily transported and installed around existing works.

A **brushed stainless steel finish** with specialist cladding meant the finished product **harmonised completely** with the historic fabric of the building.



Tel : +44 (0)1274 774050



[www.mansfieldpollard.co.uk](http://www.mansfieldpollard.co.uk)



[salesteam@mansfieldpollard.co.uk](mailto:salesteam@mansfieldpollard.co.uk)



Edward House, Parry Lane, Bradford, BD4 8TL